

# Partnership: networking & relationships



# Discussion



Why do we need  
partnerships?



We can do so  
much more  
together than  
we can do on  
our own

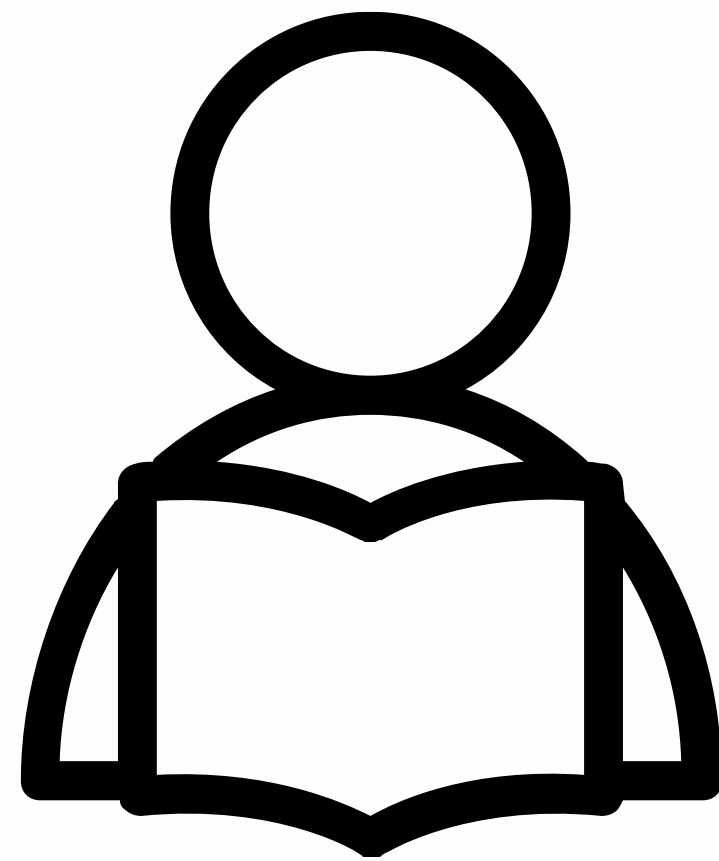
# We can't reach the lost alone



World's Population | 7.5 Billion  
Non-Christians in the world | +5 Billion

The population of London | 9.2 Million  
Internationals in London | +3 Million  
Non-Christians in London | 8.7 Million

To see a 10% shift, more than 13,000 new churches need to be planted in London to establish 874,000 new disciples of Jesus.



# It is biblical

Romans 15:22-24; 16:1-16

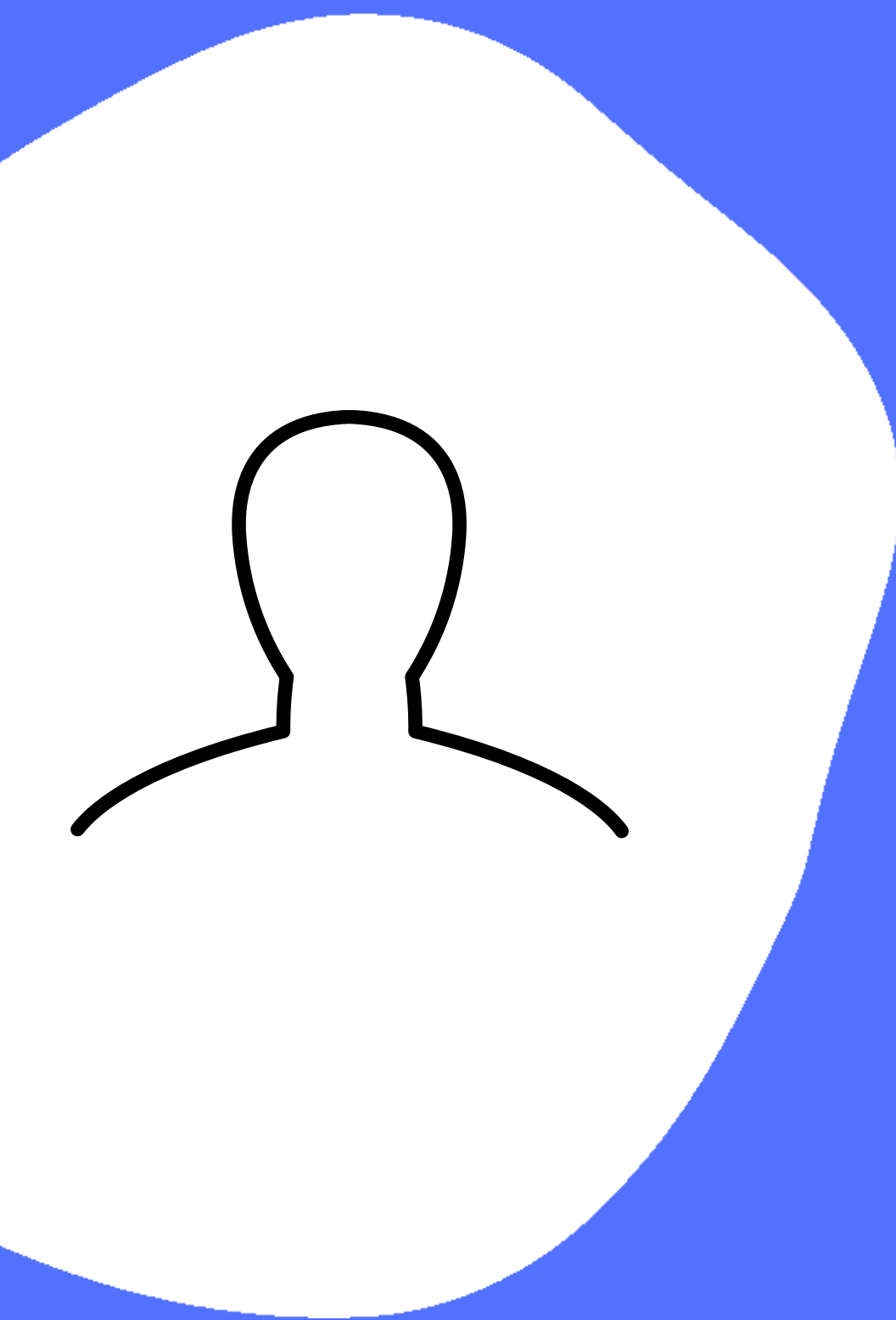
Philippians 1:5; 4:15-16

Corinthians 3:5-9

# Discussion



Why do many people find it hard to work in collaboration?



Individualism:  
They don't see the  
importance of others.

**We are relational beings  
created by a relational God.**



Egocentrism:  
They view other  
churches/organisations  
as competitors.

We want to build God's  
kingdom, not just our  
own castles.





**Tribalism:**  
They may view other  
churches as heretics

**Our tribes can be our  
homes, but never  
our prisons.**

# Discussion



What are the  
result of these  
three issues?

## COMPETE

HABIT: Mistrusting each other.

DEFINITION: Now aware of one another, yet, that knowledge is used only for personal advantage.

RESULT: This is a very unhealthy and poisoning approach!



## CO-EXIST

HABIT: Ignoring each other.

DEFINITION: In this stage, churches may not compete that openly. They may even be intentional about not taking away people from other churches.

RESULT: It falls far short of the potential the church could have in a city.



# Discussion



How can we  
change this  
unhealthy  
culture?



## COMMUNICATE

HABIT: Knowing each other.

DEFINITION: In this phase, the churches and leaders begin to communicate about church planting.

RESULT: Foundations are put in place that if built upon could move a city forward.



## COOPERATE

HABIT: Helping each other

DEFINITION: Leaders start to share resources, expertise, and maybe even begin to discuss strategy together.

RESULT: More is being done to plant and grow healthy gospel churches together.

# COLLABORATE



HABIT: Joining with each other to work for a shared goal.

DEFINITION: A kingdom-mindset ensures that tribes work for the good of one another and the city.

RESULT: Gospel partnership.



What kinds of  
partnerships  
do we need to  
have?

**tribe = denomination**

**like-minded = network**

**different = movement**

**common good = community**





# Discussion



How can we start it? Do you pray for other churches in your area?



"Is your neighbour warring against Satan? Is he really trying to labour for Christ? This is the grand question. Better a thousand times that the work should be done by other hands than not done at all."

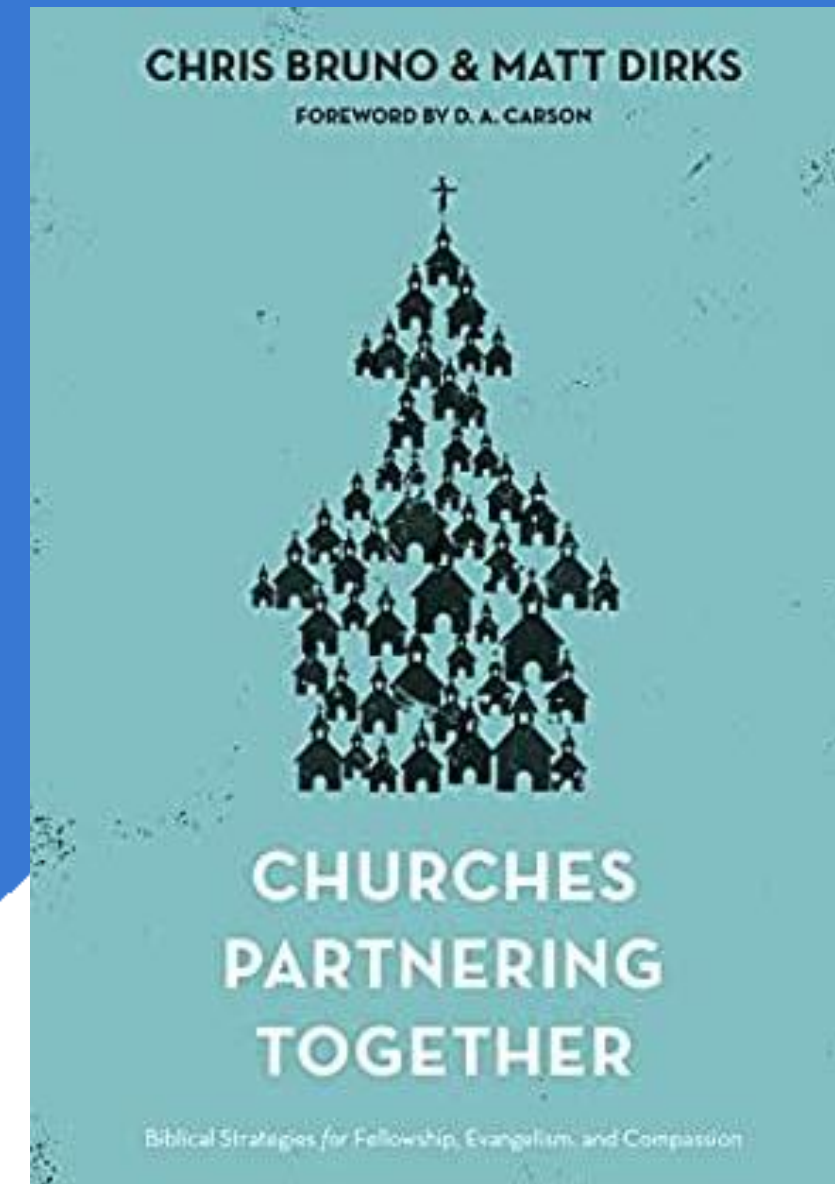
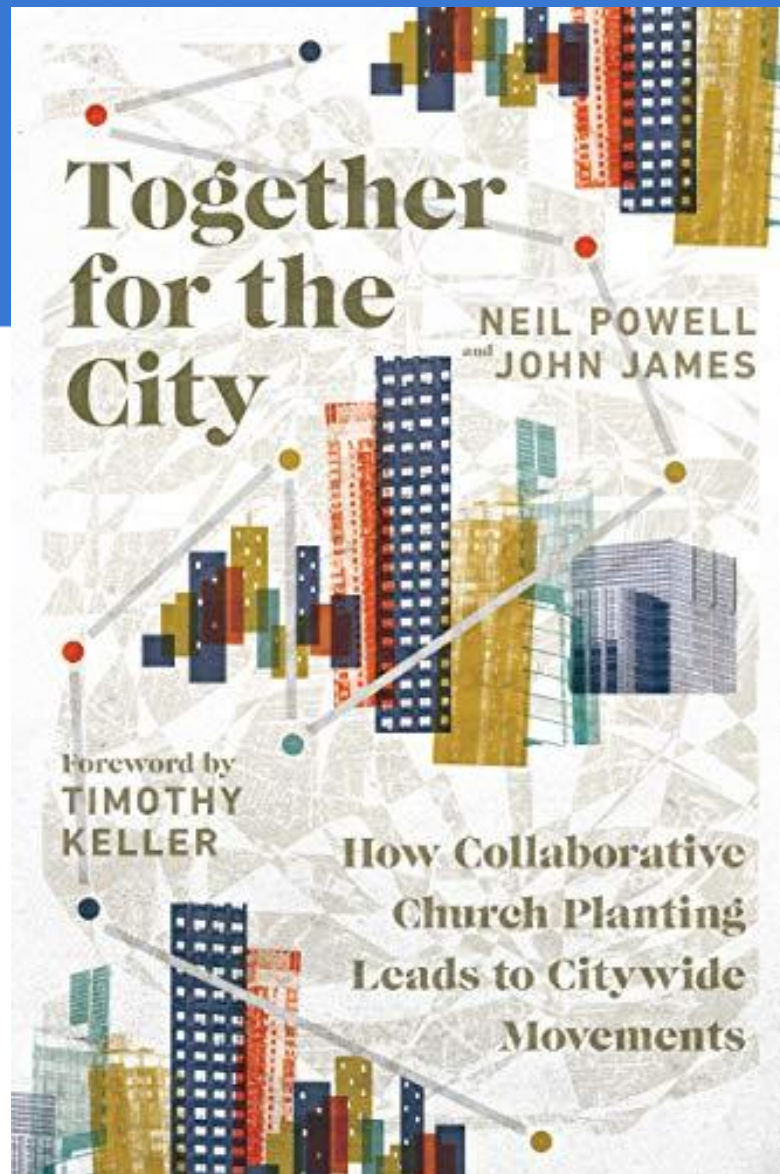
J C Ryle

# Discussion

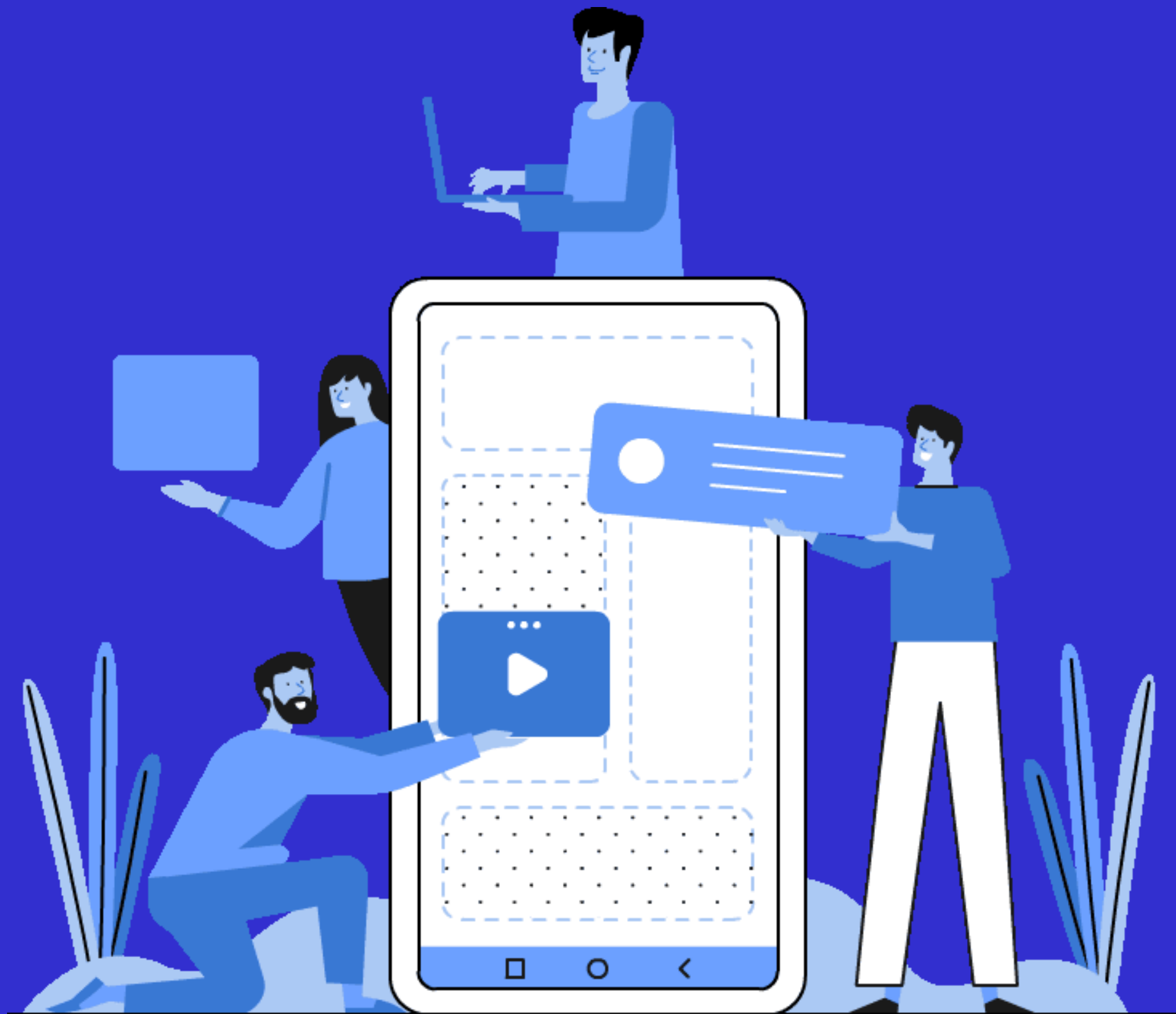
WHAT ARE SOME  
WAYS YOU HAVE  
ALREADY SEEN GOD  
EXPAND HIS  
KINGDOM THROUGH  
YOU AND YOUR  
CHURCH?



# BOOK RECOMENDATION







**Q&A**

