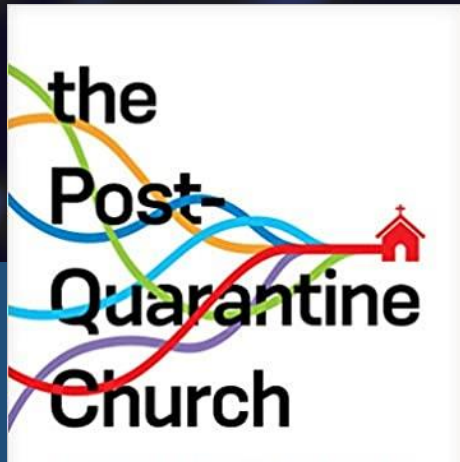


What is

# THE NEW NORMAL



```
</A> (SHORTHAND PROPERTY) /P/
</DIV> (HREF) /CSS/PROPERTIES/CSS_BACKGROUND-ATTACHMENT.CFH
<SPAN STYLE="FONT-SIZE
<SPAN STYLE="FONT-28PX;FONT-WEIGHT: BOLD;" />
URL(/PX/SMILE.GIF) REPEAT FX3D(2D)*TARGET*_BLANK
<A HREF="HTTP://CREATIVE" />
HREF) /CSS/PROPERTIES/CSS_BACKGROUND.CFH*CODE-BACKGROUND/CODE
</A> (SHORTHAND PROPERTY) /P/
```

I've a feeling we're not in Kansas  
anymore



# Same basics, same direction, different landscape

- Preaching the Word
- Praying to God
- Planning
- Providing Personal Care
- Preparing the Saints
- Proclaiming the Gospel
- Passing the Baton



TDU → FDD

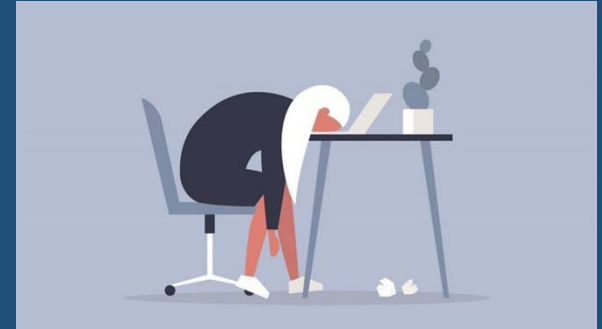
# Short term

society

- Languishing
- Short termism
- Stoicism → Epicureanism
- Trauma, suppressed grief, pressure cooker

church

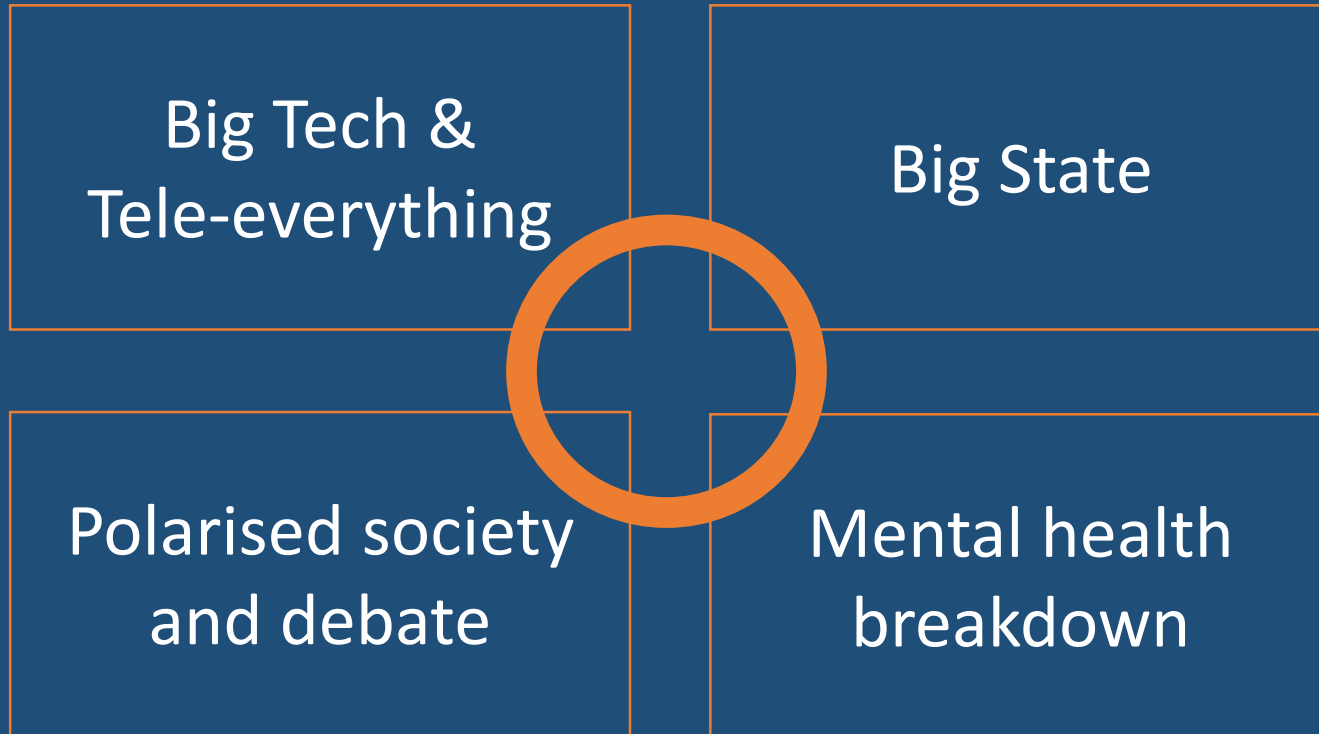
- Atrophy of service
- Erratic church attendance
- Danger of pastoral burnout
- Opportunity for change but...



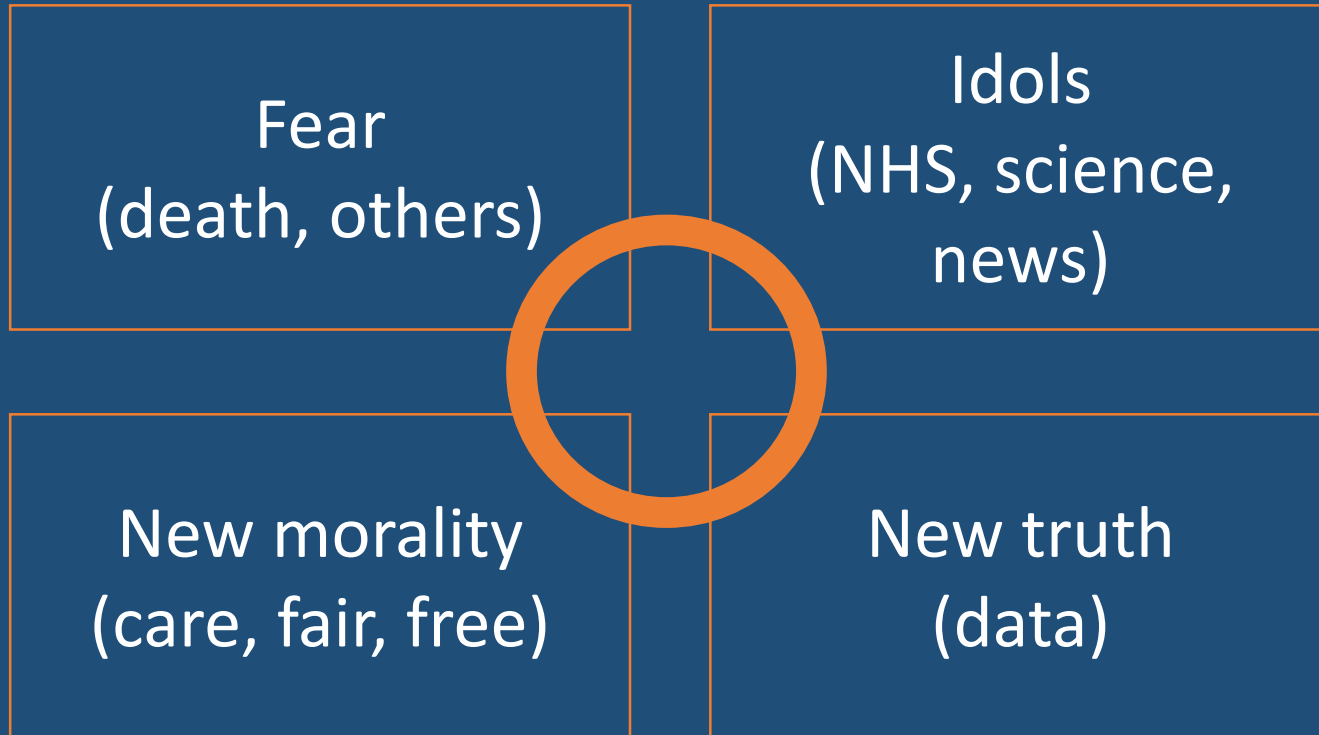
# Medium / unknown term

- Rediscovery of society?
- Rediscovery of the local?
- Economic shocks, boosts & instability
- Home working
- Less social contact

# Accelerated long term trends



# Deeper issues



Short term: languishing etc

Medium term: less social contact etc

Technology

Big State

Polarisation

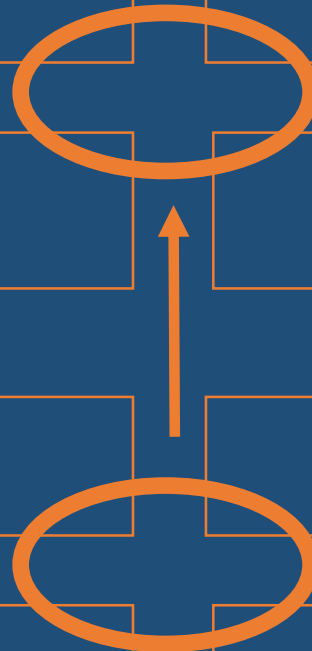
Mental health

Fear

Idols

New morality

New truth





# What's beneath?

Revelation

1:12-20

5:5-6

6:1

